
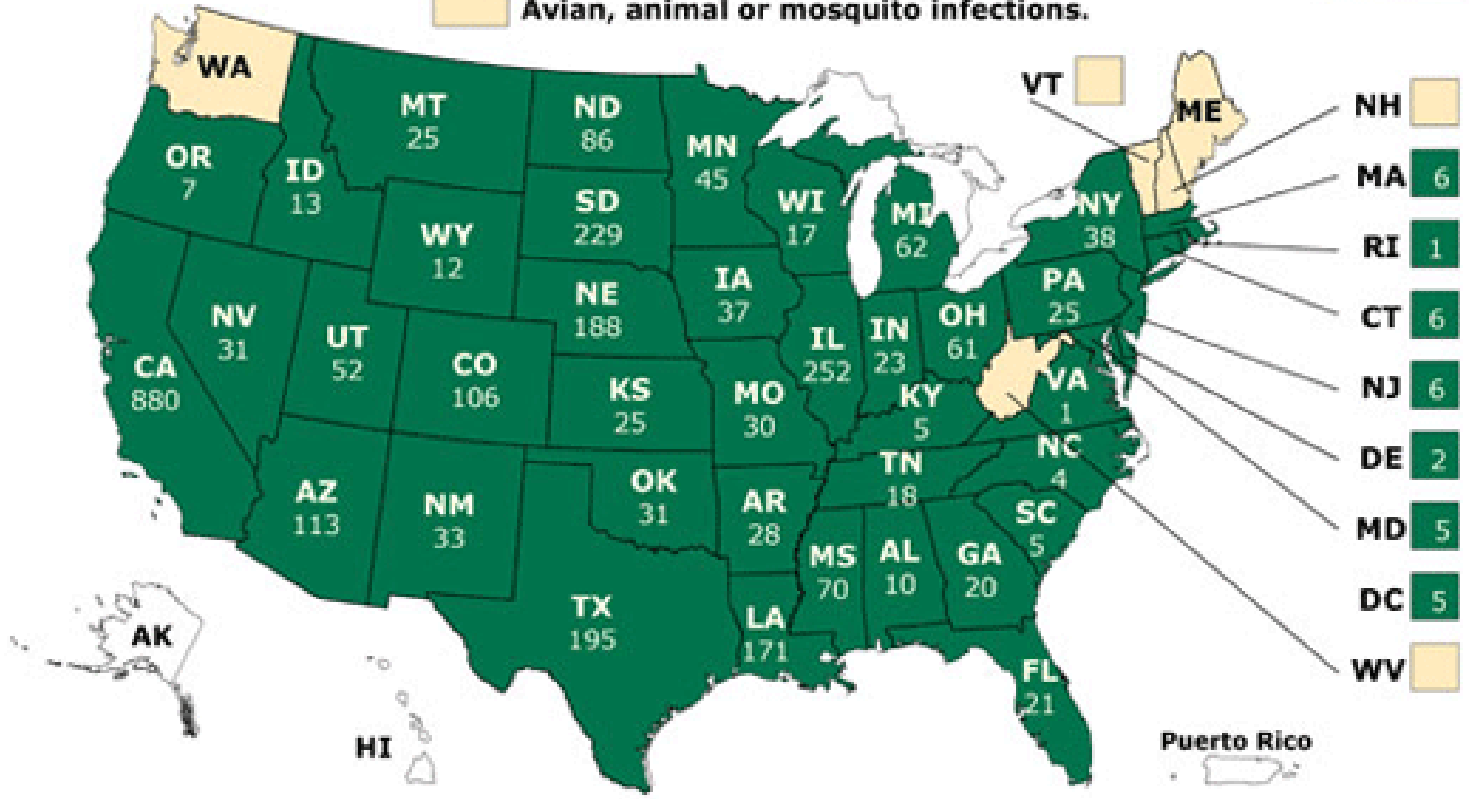
 Indicates human disease case(s).
 Avian, animal or mosquito infections.



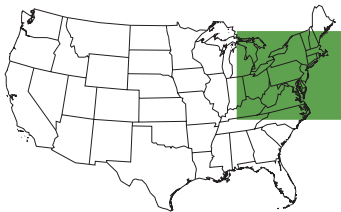


Wild Bird Cases: Cumulative Report

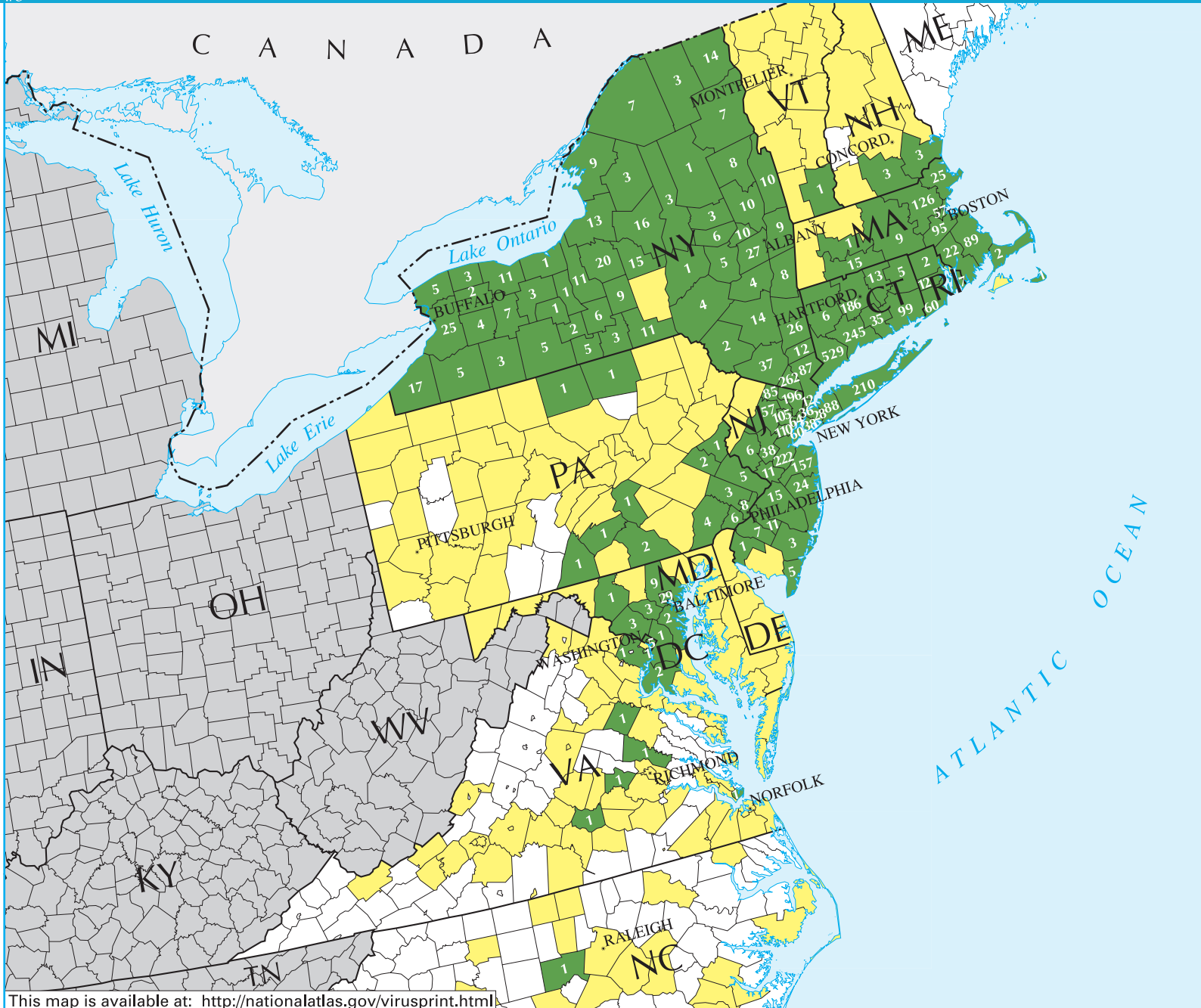
Data from reports made
between 1 JAN 00 and 8 DEC 00.

- 1 Number of Positives
- Test Samples Submitted
- No Reports
- Not Participating

These county and county equivalent data are based on tests of tissue samples from dead and diseased wild birds, provided by state health officials. Many of these data represent crows, which are especially sensitive to West Nile virus (WNV). Note that the map includes all areas of positive (confirmed or probable) WNV results, but not necessarily all areas with submitted samples or no reports.



Disclaimer: These data are provisional and may be revised or adjusted in the future.



This map is available at: <http://nationalatlas.gov/virusprint.html>